

Dental CAD formats converters

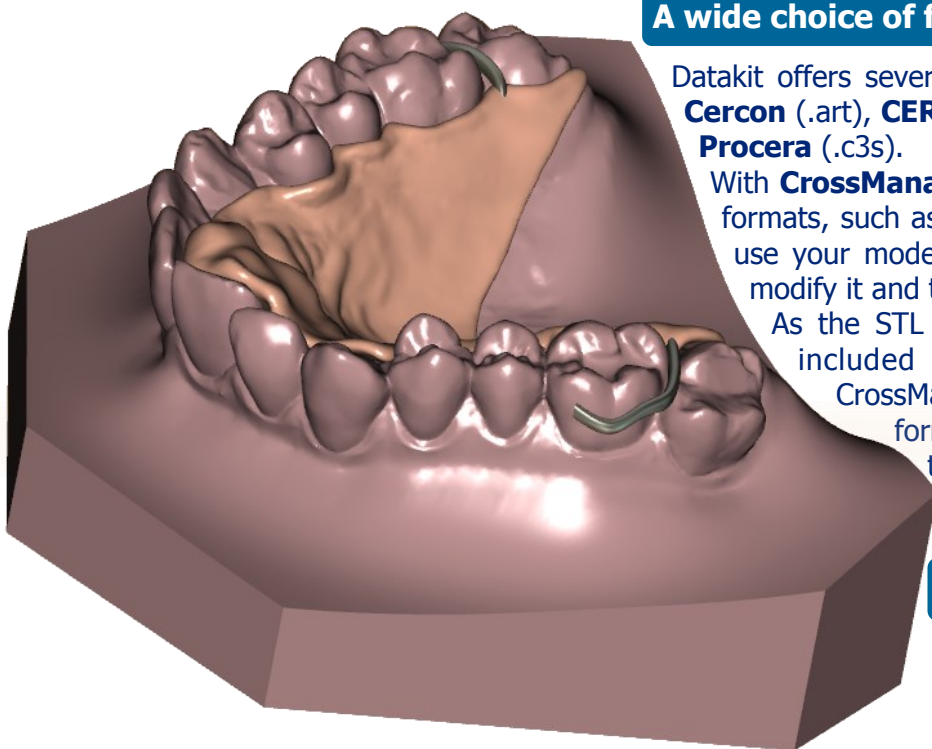


A wide choice of formats

Datakit offers several dental CAD formats: **3Shape** (.dcm), **Cercon** (.art), **CEREC** (.sdt .cdt .idt), **LAVA 3M** (.ccd2) and **Procera** (.c3s).

With **CrossManager**, you can convert these files to many formats, such as **STL**, an open format that allows you to use your models with most software and hardware, to modify it and to machine it.

As the STL export is the most frequent need, it is included in the basic configuration of CrossManager. Then, the price depends on the formats you want to add: you only pay for the formats you use.

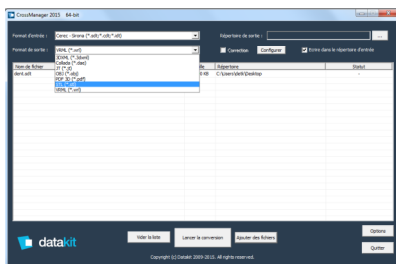


CrossManager advantages

- **High quality** conversions.
- **Easy** to install and to use.
- **Fast** data processing.
- **Responsive** customer support.
- **"Batch"** processing available.

Intuitive use

Using CrossManager is **very easy**: you just have to run the software, to drag in your files, and to choose the format to which you want to convert.



Then, you just have to click on the conversion button to get your files in the desired format. A configuration menu also allows you to adjust the conversion settings.

A large distribution network

Datakit works with many **resellers** who provide its CAD data exchange solutions **worldwide**.



Building on its experience in export, Datakit wants to further consolidate its distribution network. If you are a reseller, we invite you to join us!

Datakit also regularly attends to tradeshows dedicated to CAD and dental.